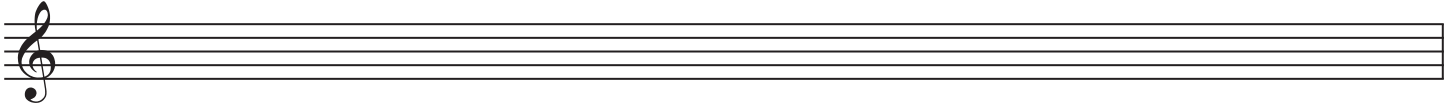
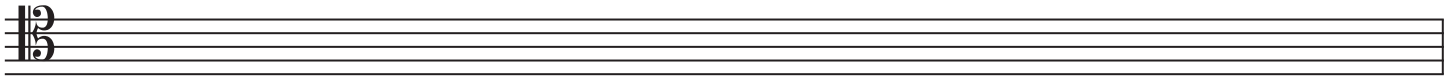


1. Write out the following modes.

a. D Dorian / Dorian on D



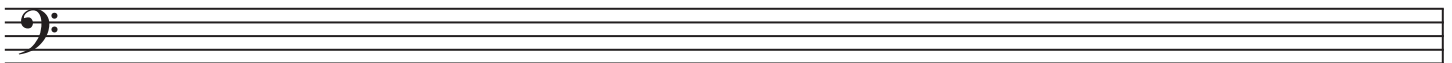
b. B-flat Lydian / Lydian on B-flat



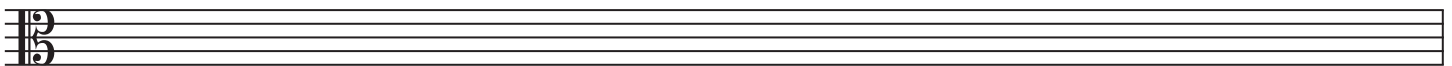
c. C-Sharp Phrygian / Phrygian on C-Sharp



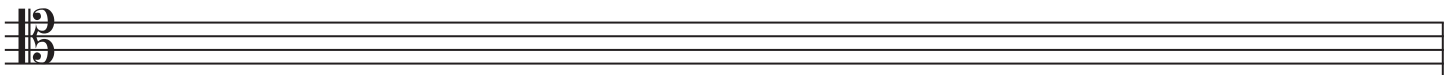
d. G Locrian / Locrian on G



e. E-flat Mixolydian / Mixolydian on E-flat



f. B-flat Aeolian / Aeolian on B-flat



g. E Ionian / Ionian on E

